

Kennedys'

01737 817718

kennedys-ipa.co.uk  
@kennedysipa

Tudor Cottage, Dorking  
Road  
Tadworth  
KT20 5SA

Kennedys' are delighted to present this handsome substantial 4 bedroom family home, complete with open plan kitchen/diner, home office and garage, all on the outskirts of the highly desirable Tadworth and Walton Heath.

£849,950



- Very spacious detached four bedroom property
- Two reception rooms
- Downstairs home office
- Large En-suite to main bedroom
- Private parking and garage
- Beautiful kitchen/breakfast room
- Stunning inglenook fire place
- Four good sized bedrooms
- Family bathroom

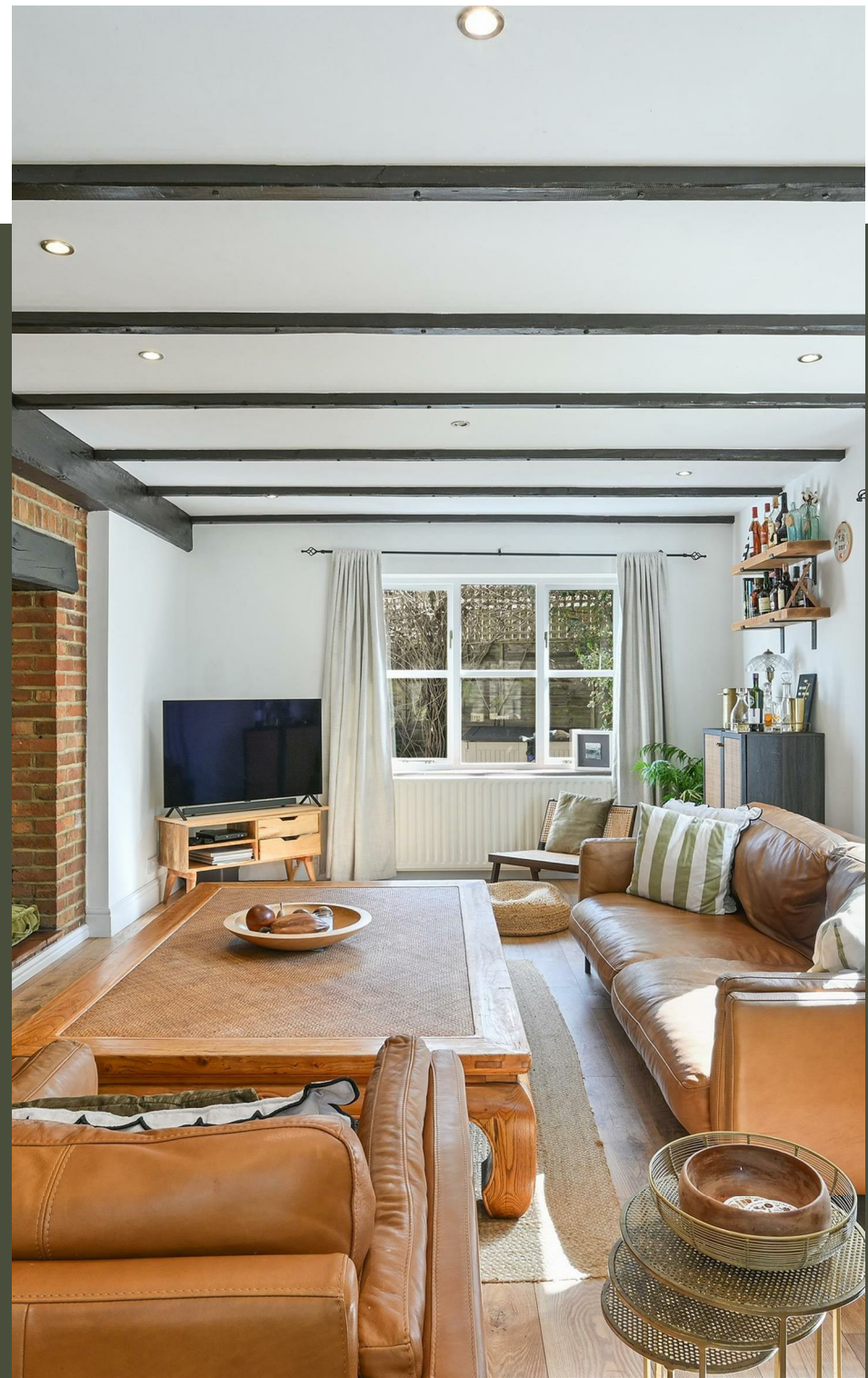


# PROPERTY DESCRIPTION

Through the front door you find yourself in a large entrance hall, with reception / play room behind French doors as well as a home office / study on the right hand side, and built in storage on the left. Also on the left is the downstairs cloakroom, with adjoining utility space. Round the corner is a large, triple aspect living room boasting a large feature fireplace with open fire. To the rear of the property is a generous sized kitchen diner, with French doors and a side door giving access to outside. The shaker-style kitchen is in good condition, with solid granite worktops, double butlers sink and good sized built in larder.

Upstairs you are welcomed by a large landing, off of which you'll find all bedrooms. The main bedroom has a spacious en-suite, along with built in wardrobes. Bedrooms two three and four are all of good sizes, with built in storage in all.

The house is located at the end of a long private drive, and with single garage and parking for a further two vehicles to the front. There is side access to the south westerly garden, which is pleasant and features raised beds and access to the garage to the side.





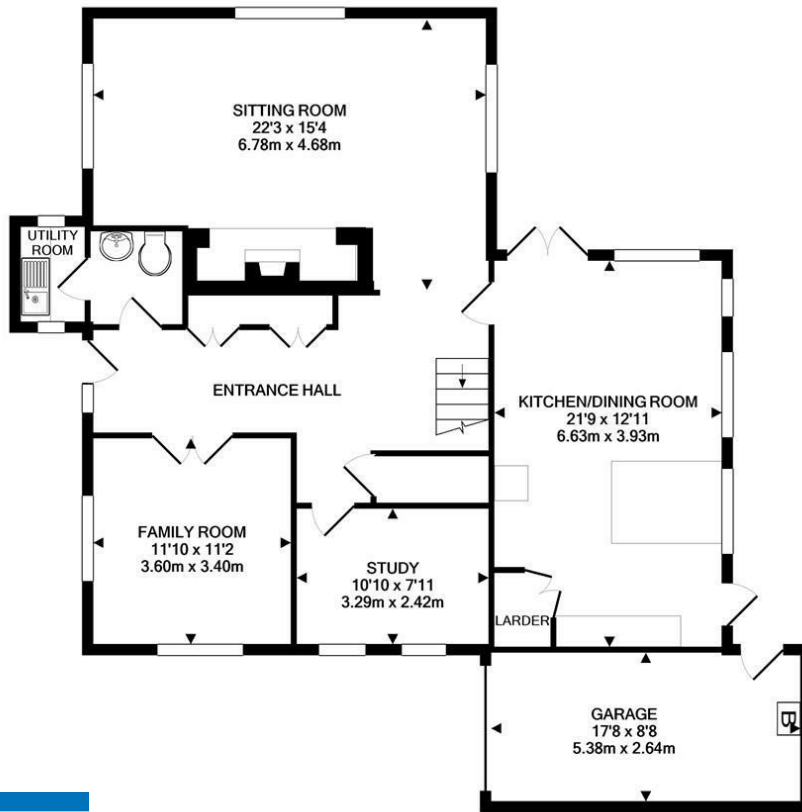




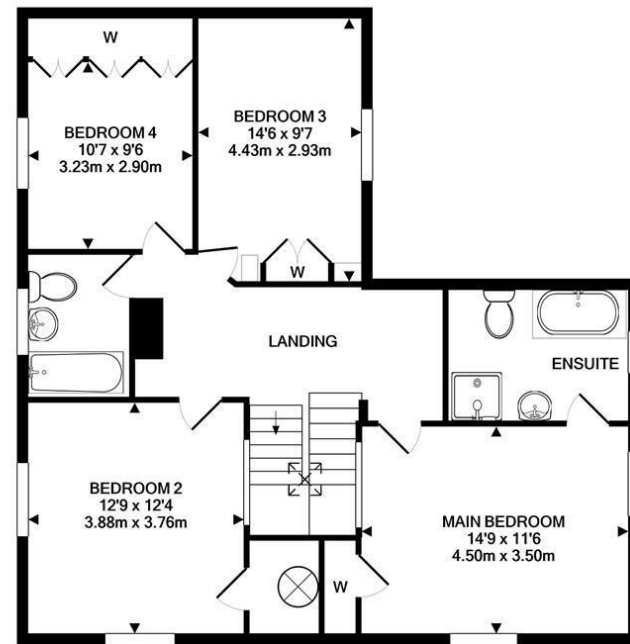
# PROPERTY DESCRIPTION

Tudor Cottage is located just on the edge of Tadworth and Walton on the Hill Heath, easily accessible to local shops and facilities including independent traders such as butchers, fishmongers, bakers, dry cleaners, vets, and florist as well as a bank, restaurants, village supermarket and mainline train station to London. There are a variety of schools within the area including Chinthurst Prep School, Tadworth & Walton Primary Schools and the renowned City of London Freeman's School and Epsom College. Local recreational facilities are located at venues such as the world famous Walton Heath Golf Club, Kingswood Golf Club, Surrey Downs Golf Club, David Lloyd in Epsom and Cheam, RAC at Woodcote Park and others besides.

To view this beautiful family home, please call a member of the Kennedys' sales team on 01737 817718.



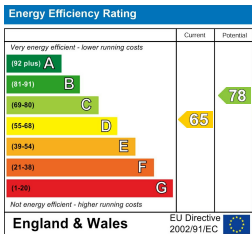
GROUND FLOOR  
APPROX. FLOOR  
AREA 1228 SQ.FT.  
(114.1 SQ.M.)



1ST FLOOR  
APPROX. FLOOR  
AREA 935 SQ.FT.  
(86.9 SQ.M.)

TOTAL APPROX. FLOOR AREA 2163 SQ.FT. (201.0 SQ.M.)

Whilst every attempt has been made to ensure the accuracy of the floor plan contained here, measurements of doors, windows, rooms and any other items are approximate and no responsibility is taken for any error, omission, or mis-statement. This plan is for illustrative purposes only and should be used as such by any prospective purchaser. The services, systems and appliances shown have not been tested and no guarantee as to their operability or efficiency can be given  
Made with Metropix ©2021



# Tudor Cottage, Dorking

If you would like to arrange a viewing, please call a member of the Kennedys sales team on 01737 817718

TENURE: Freehold

EPC RATING: D

COUNCIL: Reigate & Banstead

TAX BAND: E

These particulars, whilst believed to be accurate are set out as a general guide only for guidance and do not constitute any part of an offer or contract. Intending purchasers should not rely on them as statements of representation of fact, but must satisfy themselves by inspection or otherwise as to their accuracy. No person in Kennedys' has the authority to make or give any representation or warranty in respect of the property.



01737 817718

[kennedys-ipa.co.uk](http://kennedys-ipa.co.uk) @kennedysipa [info@kennedys-ipa.co.uk](mailto:info@kennedys-ipa.co.uk)

48 Walton Street, Walton on the Hill,  
KT20 7RT